

## THE MARK-COSTELLO COMPANY

Waste Handling & Recycling Equipment



*Systems and Solutions Since 1956*



# About Mark-Costello



We are celebrating over 60 years of specializing and providing solutions to the most complex situations that have made us the leader in the Waste Handling Equipment, On-Site Medical Waste Sterilization Equipment, Industrial Recycling Equipment, Lifts and Deodorizing Systems in the marketplace. The Mark-Costello Company meets and exceeds ANSI requirements. We offer competitive pricing for leasing and rental programs for any size of business. With plenty of happy customers and successful installs our clients are receiving the best service; with seven days a week maintenance and repair calls your system will have little to no down time. We look forward to earning your business.

## Waste Compactors



Mark-Costello's Self-Contained Compactor-Containers are ideal for waste with high liquid content and for applications where space is limited. Each compactor stores liquid and controls insect and odor problems.

Model	Size	Charge Box Capacity	Feed Opening	Complete Assembly Weight	Normal Pressure	Maximum Pressure	Normal Force Rating	Maximum Force Rating	Motor	Cycle Time
RJ-88SC	15, 20, and 24 cu. yd. 11.5, 15.3 and 18.3 m <sup>3</sup>	0.7 cu. yd. 0.54 m <sup>3</sup>	30 1/2" x 48" 775mm x 1219mm	8,100** lbs 3669 kg	34.7 psi 239 kPa	40.8 psi 281 kPa	36,600 lbs. 163 kN	43,100 lbs. 192 kN	5 hp	44 sec.
RJ-88HT <sup>†</sup>	16, 20 and 24 cu. yd. 12.2, 15.3 and 18.3 m <sup>3</sup>	0.7 cu. yd. 0.54 m <sup>3</sup>	30 1/2 x 48 775mm x 1219mm	8,490** lbs 3846 kg	34.7 psi 239 kPa	40.8 psi 281 kPa	36,600 lbs. 163 kN	43,100 lbs. 192 kN	5 hp	44 sec.
RJ-100SC Ultra	30 and 34 cu. yd. 22.9 and 26 m <sup>3</sup>	1.32 cu. yd. 1.01 m <sup>3</sup>	35 x 60 889mm x 1524mm	10,920** lbs 4947 kg	20.9 psi 144 kPa	26 psi 179.3 kPa	36,300 lbs. 161 kN	45,200 lbs. 201 kN	10 hp	37 sec.
RJ-100SC	30 and 34 cu. yd. 22.9 and 26 m <sup>3</sup>	1.32 cu. yd. 1.01 m <sup>3</sup>	35 x 60 889mm x 1524mm	10,570** lbs 4788 kg	20.9 psi 144 kPa	26 psi 179.3 kPa	36,300 lbs. 161 kN	45,200 lbs. 201 kN	10 hp	37 sec.
RJ-250SC	15, 20, 25, 30, 34 and 39 cu. yd. 11.6, 15.3, 19.1, 22.9, 26, and 29.8 m <sup>3</sup>	1.31 cu. yd. 1.0 m <sup>3</sup>	41 x 58 1041mm x 1473mm	11,790** lbs 5341 kg	27.1 1.87 bar	33.7 psi 2.32 bar	39,900 lbs. 177 kN	49,500 lbs. 220 kN	10 hp	33 sec.
RJ-250HT <sup>†</sup>	25 and 29 cu. yd. 19.1 and 22.2 m <sup>3</sup>	1.31 cu. yd. 1.0 m <sup>3</sup>	41 x 58 1041mm x 1473mm	11,604** lbs 5257 kg	27.1 1.87 bar	33.7 psi 2.32 bar	39,900 lbs. 177 kN	49,500 lbs. 220 kN	10 hp	33 sec.
RJ-250SC Ultra	30 and 34 cu. yd. 22.9 and 26 m <sup>3</sup>	1.31 cu. yd. 1.0 m <sup>3</sup>	41 x 58 1041mm x 1473mm	10,100** lbs 4575 kg	27.1 1.87 bar	33.7 psi 2.32 bar	39,900 lbs. 177 kN	49,500 lbs. 220 kN	10 hp	33 sec.

\* WASTEC Rating

\*\* Weight for largest capacity unit. Other weights vary according to container capacity

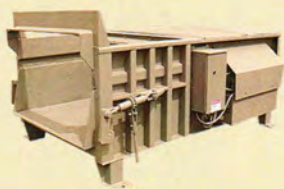
<sup>†</sup> Feature a hydraulic tailgate for applications where maneuvering space is limited







Mark-Costello's general-purpose compactors are ideally suited for commercial and medium industrial applications. Over 52,000 lbs. of compaction force, with Tricon Fullness Assurance System and multiple options available. Ideal for small distribution centers, warehouses and shopping centers. Suited for industrial applications such as the disposal of skids and cartons and recycling OCC (old cardboard containers), paper, and similar materials.

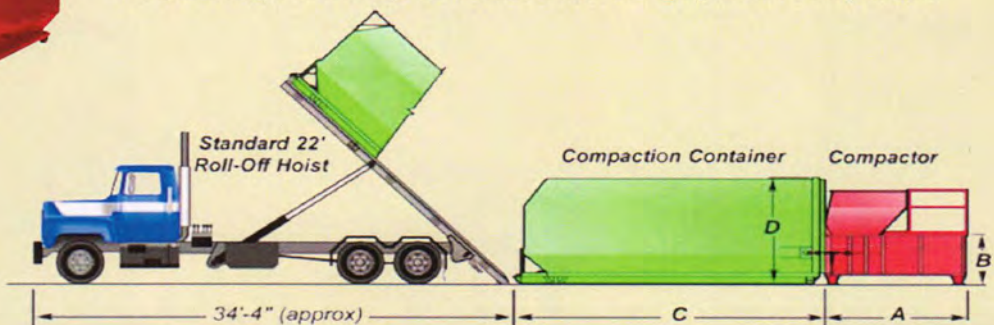


Model	Charge Box Capacity*	Weight	Clear Top Opening	Normal Pressure	Maximum Pressure	Normal Force Rating	Maximum Force Rating	Motor	Cycle Time
RJ-225	1.55 cu. yd. 1.19 m <sup>3</sup>	5,150 lbs. 2336 kg	40½" x 60" 1029mmx1524mm	26.9 psi 1.85 bar	31.7 psi 2.19 bar	46,700 lbs. 208 kN	55,100 lbs. 245 kN	10 hp	56 sec.
RJ-225Ultra	1.55 cu. yd. 1.19 m <sup>3</sup>	5,150 lbs. 2336 kg	40½" x 60" 1029mmx1524mm	25.2 psi 1.7 bar	30.1 psi 2.0 bar	43,800 lbs. 195 kN	52,300 lbs. 233 kN	10 hp	56 sec.
RJ-225HD	1.55 cu. yd. 1.19 m <sup>3</sup>	5,450 lbs. 2472 kg	40½" x 60" 1372mmx1524mm	34.1 psi 2.35 bar	39 psi 2.69 bar	59,400 lbs. 264 kN	67,900 lbs. 302 kN	15 hp	48 sec.
RJ-275	2.5 cu. yd. 1.91 m <sup>3</sup>	5,875 lbs. 2665 kg	54" x 60" 1321mmx1524mm	? psi 114 bar	? psi 143 bar	46,700 lbs. 208 kN	55,100 lbs. 245 kN	10 hp	60 sec.
RJ-275XHD	2.5 cu. yd. 1.91 m <sup>3</sup>	7,900 lbs. 3583 kg	52" x 60" 1715mmx1524mm	? psi 145 bar	? psi 165 bar	80,800 lbs. 359 kN	92,400 lbs. 411 kN	15 hp	52 sec.
RJ-325	2.55 cu. yd. 1.95 m <sup>3</sup>	6,700 lbs. 3038 kg	67½" x 60" 1715mmx1524mm	? psi 114 bar	? psi 143 bar	46,700 lbs. 208 kN	55,100 lbs. 245 kN	15 hp	50 sec.
RJ-325HD	2.55 cu. yd. 1.91 m <sup>3</sup>	7,375 lbs. 3345 kg	67½" x 59½" 1715mmx1524mm	? psi 143 bar	? psi 143 bar	46,700 lbs. 208 kN	55,100 lbs. 245 kN	15 hp	50 sec.
RJ-450	2.95 cu. yd. 2.26 m <sup>3</sup>	8,000 lbs. 3629 kg	67½" x 60" 1715mmx1524mm	23.9 psi 162 bar	28.1 psi 191 bar	48,100 lbs. 214 kN	56,500 lbs. 251 kN	15 hp	50 sec.
RJ-500	4.5 cu. yd. 3.4 m <sup>3</sup>	8,500 lbs. 3856 kg	83" x 60" 2108mmx1524mm	32.5 psi 2.2 bar	38.3 psi 2.6 bar	65,400 lbs. 291 kN	77,000 lbs. 343 kN	15 hp	53 sec.
RJ-500HD	4.5 cu. yd. 3.4 m <sup>3</sup>	10,300 lbs. 4672 kg	82" x 59¼" 2082mmx1524mm	47.7 psi 3.2 bar	54.2 psi 3.7 bar	84,700 lbs. 377 kN	96,200 lbs. 428 kN	20 hp	53 sec.
RJ-550	4.22 cu. yd. 3.23 m <sup>3</sup>	10,500 lbs.	97" x 60" 2464mmx1524mm	32.5 psi 2.21 bar	38.3 psi 2.61 bar	65,400 lbs. 291 kN	77,000 lbs. 343 kN	15 hp	60 sec.

\* WASTEC Rating



Octagon Compaction Containers are designed with a contoured end, which creates a rolling effect as solid waste is compressed into the container. This unique design fills every void and results in highly dense compaction.





# Vertical & Retail Waste Compactors



Mark-Costello's Vert-I-Pack (VIP), compactors are ideally suited when available space for a compacting system is limited, the volume of wet waste does not justify a larger system. This mighty system comes in 3-6 cubic yards bin options. This unit is ideal for: food courts, restaurants, cafeterias, hospitals, schools and many more applications. Odor control neutralizers available.

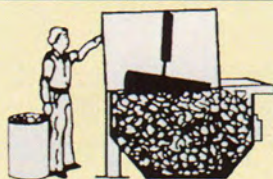
*Ask about our Rental Programs!*

Model	Size	Feed Height	Complete Assembly Weight	Container Weight	Overall Height	Overall Length/Width	Overall Depth	Normal Pressure	Maximum Pressure	Normal Force Rating	Maximum Force Rating	Motor	Cycle Time
Front-load collection trucks													
Front feed	3 cu. yd. 2.1 m <sup>3</sup>	46 3/4" 1187mm	3,464 lbs 1571 kg	675 lbs 306 kg	86 1/2" 2197mm	96" 2438mm	62 1/2" 1588mm	15.3 psi 1.0 bar	17.5 psi 1.2 bar	26,400 lbs. 117 kN	30,200 lbs. 134 kN	3 hp	30 sec.
Front/Rearfeed	4 cu. yd. 3.1 m <sup>3</sup>	44 7/8" 1140mm	4,014 lbs 1820 kg	923 lbs 419 kg	85 1/4" 2165mm	92 3/8" 2346mm	83 1/4" 2115mm	15.3 psi 1.0 bar	17.5 psi 1.2 bar	26,400 lbs. 117 kN	30,200 lbs. 134 kN	3 hp	30 sec.
Front/Rearfeed	6 cu. yd. 4.6 m <sup>3</sup>	56 1/2" 1435mm	4,161 lbs 1887 kg	1,052 lbs 477 kg	96 7/8" 2461mm	92 3/8" 2346mm	83 1/4" 2115mm	15.3 psi 1.0 bar	17.5 psi 1.2 bar	26,400 lbs. 117 kN	30,200 lbs. 134 kN	3 hp	30 sec.
Front/Rearfeed	8 cu. yd. 6.1 m <sup>3</sup>	74 5/8" 1895mm	4,351 lbs 1973 kg	1,360 lbs 612 kg	115" 2921mm	92 3/8" 2346mm	83 1/4" 2115mm	15.3 psi 1.0 bar	17.5 psi 1.2 bar	26,400 lbs. 117 kN	30,200 lbs. 134 kN	3 hp	30 sec.
Side feed	6 cu. yd. 4.6 m <sup>3</sup>	61 3/4" 1569mm	4,055 lbs 1839 kg	1,285 lbs 583 kg	101 3/4" 2585mm	96" 2438mm	76" 1930mm	15.3 psi 1.0 bar	17.5 psi 1.2 bar	26,400 lbs. 117 kN	30,200 lbs. 134 kN	3 hp	30 sec.
Side feed	8 cu. yd. 6.1 m <sup>3</sup>	79 3/4" 2026mm	4,290 lbs 1946 kg	1,440 lbs 653 kg	119 3/4" 3042mm	96" 2438mm	76" 1930mm	15.3 psi 1.0 bar	17.5 psi 1.2 bar	26,400 lbs. 117 kN	30,200 lbs. 134 kN	3 hp	30 sec.

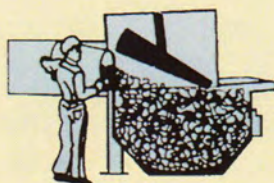
Odor Control System



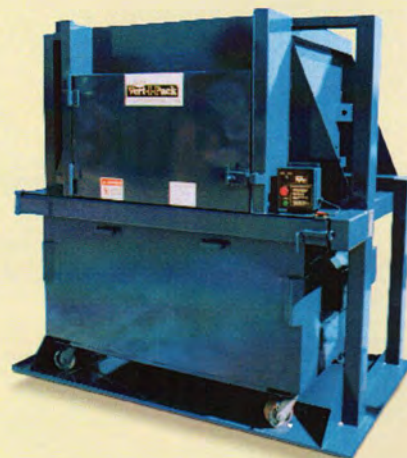
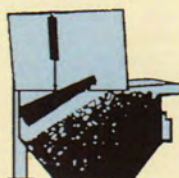
Step 1



Step 2

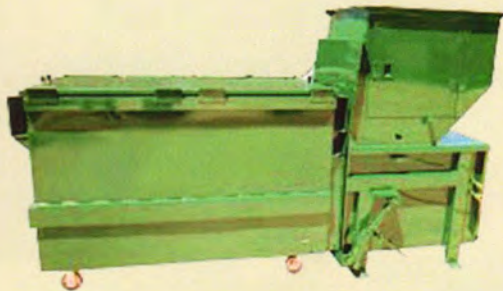


Step 3



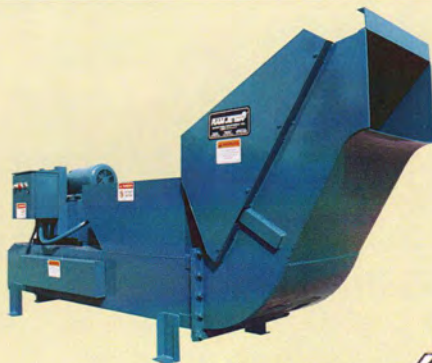
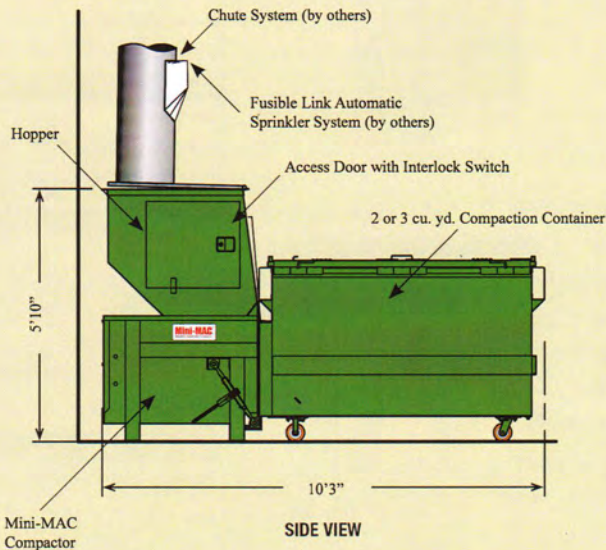


# Apartment Waste Compactors



The Mini-Mac apartment compactor is a small, yet powerful compactor that can fit in areas where space is limited such as trash rooms of apartments and high-rise buildings. It is commonly used in conjunction with a chute feed system in multi-storied buildings.

Model	A†	B	C†	D	E
Mini-MAC	16" 406mm	165" 4191mm	138" 3505mm	35" 889mm	61½" 1562mm
RJ-30	62¾" 1594mm	216††" 5486mm	120" 3048mm	35" 889mm	138½" 3518mm



RJ-30 features a specially designed curved tube that discharges a densely compacted log of refuse into any size and type of receiving container. Eighteen to twenty-four inch logs of refuse are gravity fed into the container. Because of the exclusive "S" shaped tube, the RJ-30 achieves higher compaction ratios than any other compactor available. Like the mini-mac its unique design is ideal for apartments and small areas.



Model	Charge Box Capacity*	Weight	ClearTopOpening	Normal Pressure	Maximum Pressure	NormalForce Rating	Maximum Force Rating	Motor	Cycle Time
Mini-Mac	0.28 cu. yd. 0.21 m³	1,600 lbs. 6342 kg	22.5" x 28" 559mm x 711mm	1,650 psi 114 bar	1,950 psi 134 bar	13,900 lbs. 62 kN	16,400 lbs. 73 kN	3 hp	21 sec.
RJ-30	0.28 cu. yd. 0.21 m³	3,300 lbs. 7973 kg	28" x 29" 711mm x 737mm	1,200 psi 83 bar	1,500 psi 103 bar	46,200 lbs. 206 kN	57,700 lbs. 257 kN	15 hp	32 sec.

\* WASTECC Rating  
 \*\* ¾ hp, 120 volt single-phase or 5 hp three-phase motors also available



# Recycling Balers



Mark-Costello has a complete line of Vertical Balers in a variety of sizes to suit your recycling needs. Create bales of cardboard, paper, plastics, rags, cans, and many other recyclable materials.



Performance		V-6030 HD
Cylinder (bore, rod, & stroke)		6" x 3.5" x 48" (152mm x 89mm x 1219mm)
Pump flow (gear pump)		10.5 gpm (39.7 lpm)
Motor		10 hp (1,750 rpm) (7.46 kW)
System pressure		2,000 psi (13790 kPa)
Maximum system pressure		2,200 psi (15168 kPa)
Maximum platen force		62,200 lbs. (277 kN)
Platen pressure		37 psi (255 kPa)
Cycle time		56 sec.
Electrical Equipment		
Electrical		208/230/460 3-phase
Electrical control voltage		120 VAC
OFF/ON Security Key Switch; 3-Position Selector Switch; EMERGENCY STOP Button; IEC Motor Starter and Overload, Programmable Smart Relay UL* and CUL* listed		
Bale Size Data		
Bale size		60"W x 30"D x 48"H (1524mm x 762mm x 1219mm)
Bale volume		50 cu.ft. (1.42 m <sup>3</sup> )
Bale weight (OCC)		Up to 1,100 lbs. (499 kg)
Number of bale ties (14 ga x 14" L)		5
Total baler weight		5,050 lbs. (2291 kg)
Structural		
Body side plates		7 Ga.
Body floor		7 Ga. floor plate, 6" (152mm) structural channel
Floor structure		6" (152mm) structural channel
Top cylinder supports		Heavy 8" (203mm) structural channel integrated into main frame of 10" (254mm) 6.5 structural channel and 1" x 12" (25mm x 305mm) plate beam with 1" (25mm) pinning plate
Platen face		1/4" (6mm) plate, 6" (152mm) structural channels and tubes
Bale door		7 ga. door plate, 4"x3" (102mm x 76mm) structural tube to top rail
Ejector		Manually engaged, chain type
Paint		Primer bottom coat; industrial grade top coat, low VOC, high solids



The closed-end horizontal Baler processes a variety of materials. With heavy duty, spring loaded retainer locks the largest model can process up to 20 tons of OCC in typical day's shift.

Specifications	CE-303042-720	CE-503042-720	CE-503042-830	CE-504242-830	CE-504842-830	CE-604242-830	CE-604842-830	CE-724842-830
Feed Chamber	30"L x 30"W (762mm x 762mm)	50"L x 30"W (1270mm x 762mm)	50"L x 30"W (1270mm x 762mm)	50"L x 42"W (1270mm x 1067mm)	50"L x 48"W (1270mm x 1219mm)	60"L x 42"W (1524mm x 1010mm)	60"L x 48"W (1524mm x 1062mm)	72"L x 48"W (1829mm x 1219mm)
Bale Weight (OCC)	Up to 1,400 lbs. 635 kg	Up to 1,400 lbs. 635 kg	Up to 1,500 lbs. 680 kg	Up to 1,800 lbs. 817 kg	Up to 2,000 lbs. 907 kg	Up to 1,800 lbs. 817 kg	Up to 1,800 lbs. 817 kg	Up to 1,800 lbs. (816 kg)
Performance								
Cycle Time	22 sec.	22 sec.	20 sec.	20 sec.	20 sec.	22 sec.	22 sec.	27 sec.
Platen Force	70,700 lbs. 315 kN	96,200 lbs. 428 kN	125,700 lbs. 559 kN	125,700 lbs. 559 kN	125,700 lbs. 559 kN	125,700 lbs. 559 kN	125,700 lbs. 559 kN	125,700 lbs. 559 kN
Platen Pressure	57.5 psi (396.4 kPa)	78.2 psi (539.2 kPa)	102.2 psi (704.7 kPa)	73 psi (503.3 kPa)	63.9 psi (440.6 kPa)	73 psi (503.3 kPa)	63.9 psi (440.6 kPa)	71.0 psi (489.5 kPa)
Ram Penetration	16" (406mm)	16" (406mm)	16" (406mm)	16" (406mm)	16" (406mm)	16" (406mm)	16" (406mm)	16" (406mm)
Electrical Equipment								
Electrical Motor 3/60-208/230/460	20 hp (14.9 kW)	20 hp (14.9 kW)	30 hp (22.4 kW)	30 hp (22.4 kW)	30 hp (22.4 kW)	30 hp (22.4 kW)	30 hp (22.4 kW)	30 hp (22.4 kW)
UL* and CUL* listed								
Hydraulic Equipment								
Pump Capacity	50 gpm 189 lit/min	50 gpm 189 lit/min	75 gpm 284 lit/min	75 gpm 284 lit/min	75 gpm 284 lit/min	75 gpm 284 lit/min	75 gpm 284 lit/min	75 gpm 284 lit/min
Operating Pressure	2500 psi 172 bar	2500 psi 172 bar	2500 psi 172 bar	2500 psi 172 bar	2500 psi 172 bar	2500 psi 172 bar	2500 psi 172 bar	2500 psi 172 bar
Reservoir Capacity	150 gal. (568 lit.)	150 gal. (568 lit.)	150 gal. (568 lit.)	150 gal. (568 lit.)	150 gal. (568 lit.)	150 gal. (568 lit.)	150 gal. (568 lit.)	150 gal. (568 lit.)
Cylinder (Bore)	7" (178mm)	7" (178mm)	8" (203mm)	8" (203mm)	8" (203mm)	8" (203mm)	8" (203mm)	7" (178mm)
Cylinder (Rod)	4.5" (114mm)	4.5" (114mm)	4.5" (114mm)	4.5" (114mm)	4.5" (114mm)	4.5" (114mm)	4.5" (114mm)	4.5" (114mm)
Cylinder (Stroke)	68" (1727mm)	68" (1727mm)	68" (1727mm)	68" (1727mm)	68" (1727mm)	78" (1981mm)	78" (1981mm)	9" (2286mm)





Side-Eject Horizontal Baler is engineered to save valuable space with the bale access and tie-off system in the front of the unit. Also the Side-Eject puts the bale in position for the fork lift to move in desired location.

Specifications	SE-504842-830	SE-504242-830	SE-503042-830	SE-503042-720	SE-604842-830	SE-504230-950AUBC	SE-503042-950AUBC
Bale Length	72" 1829mm	72" 1829mm	72" 1829mm	72" 1829mm	72" 1829mm	60" 1524mm	60" 1524mm
Bale Width x Height	48"x42" 1219mmx1067mm	42"x42" 1067mmx1067mm	30"x42" 762mm x 1067mm	30"x42" 762mm x 1067mm	48"x42" 762mm x 1067mm	42"x30" 1067mm x 762mm	30"x42" 762mm x 1067mm
Clear Top Opening	50"x46" 1270mmx1168mm	50"x40" 1270mmx1016mm	50"x28" 1270mm x 711mm	50"x28" 1270mm x 711mm	60"x48" 1524mmx1219mm	50"x40" 1270mmx1016mm	50"x28" 1270mm x 711mm
Bale Weight (OCC)	1800-2000 lbs. 817-907 kg	1600-1800 lbs. 726-817 kg	1300-1500 lbs. 590-680 kg	1200-1400 lbs. 544-635 kg	Up to 2,000 lbs. Up to 907 kg	Up to 650 lbs. Up to 295 kg	Up to 650 lbs. Up to 295 kg
<b>Performance</b>							
Cycle Time (empty)	20 sec.	20 sec.	20 sec.	21 sec.	22 sec.	21 sec.	21 sec
Platen Force	125,700 lbs. 559.14 kN	125,700 lbs. 559.14 kN	125,700 lbs. 559.14 kN	96,200 lbs. 427.92 kN	125,700 lbs. 559.14 kN	159,000 lbs. 707.26 kN	159,000 lbs. 707.26 kN
Platen Pressure	63.9 psi 440.6 kPa	73.0 psi 503.3 kPa	102.2 psi 704.7 kPa	78.2 psi 539.2 kPa	64 psi 440.6 kPa	133 psi 917 kPa	133 psi 917 kPa
Penetration	16" 406mm	16" 406mm	16" 406mm	16" 406mm	16" 406mm	16" 406mm	16" 406mm
Weight	20,300 lbs. 9208 kg	18,600 lbs. 8437 kg	16,000 lbs. 7257 kg	15,900 lbs. 7212 kg	20,900 lbs. 9480 kg	17,000 lbs. 7711 kg	21,000 lbs. 9526 kg
<b>Electrical Equipment</b>							
Electrical Motor 3/60-208/230/460	30 hp 22.4 kW	30 hp 22.4 kW	30 hp 22.4 kW	20 hp 14.9 kW	30 hp 22.4 kW	50 hp 37.3 kW	50 hp 37.3 kW
Electrical Control Voltage	120 VAC	120 VAC	120 VAC	120 VAC	120 VAC	120 VAC	120 VAC
UL* and CUL* listed							
<b>Hydraulic Equipment</b>							
Pump Type	Vane	Vane	Vane	Vane	Vane	Vane	Vane
Pump Capacity	75 gpm 284 lit/min	75 gpm 284 lit/min	75 gpm 284 lit/min	50 gpm 189 lit/min	75 gpm 284 lit/min	94 gpm 356 lit/min	94 gpm 356 lit/min
Operating Pressure	2500 psi 172 bar	2500 psi 172 bar	2500 psi 172 bar	2500 psi 172 bar	2500 psi 172 bar	2500 psi 172 bar	2500 psi 172 bar
Reservoir	150 gal. 568 lit.	150 gal. 568 lit.	150 gal. 568 lit.	150 gal. 568 lit.	150 gal. 568 lit.	200 gal. 757 lit.	200 gal. 757 lit.
Hydraulic Cylinder (Bore)	8" 203mm	8" 203mm	8" 203mm	7" 178mm	8" 203mm	9" 229mm	9" 229mm
Hydraulic Cylinder (Rod)	4.5" 114mm	4.5" 114mm	4.5" 114mm	4.5" 114mm	4.5" 114mm	6" 152mm	6" 152mm
Hydraulic Cylinder (Stroke)	68" 1727mm	68" 1727mm	68" 1727mm	68" 1727mm	78" 1981mm	78" 1981mm	78" 1981mm



The Auto-Tie Baler has exclusive gear driven tying system and replaceable serrated body and ram shear blades. Open-end baler's unique highly effective gear twistlers result in up to 10% reduction in wire consumption and similar cost.



Two-Ram Baler produces high-density bales that easily switch between various recyclables with the programmable controller. Multi-purpose door can act as a separator, bale release or bale clamp.

Call for Specs and Throughput  
(562) 630-7950

**MC<sub>7</sub>**



# Cart Dumpers



Ground Level Dumpers are used to dump containers at ground level into your stationary or self-contained compactor. They are ideal for park systems, shopping malls, and large or multi-building plants.



Tilt Cart Dumpers handle molded plastic tilt trucks (one and two yard rubbermaid tilt hoppers). They are designed to hold the tilt truck in place for smooth dumping without the need for mechanical locks.



Container cart dumpers are mounted on self-contained and or stationary compactors. This space saving design allows multiple users to wheel up their own 65 or 95 gallon container and dump waste into the compactor.



Cart to Cart Dumpers are primarily designed to dump 95 gallon containers. But, with our change out cart attachments-several different types of containers can be dumped with one dumper. Whether its 10 or 17 gallon sharp containers or 31 and 43 gallon rectangular containers our cart to cart dumpers will dump multiple different size and types of containers into our autoclave carts.

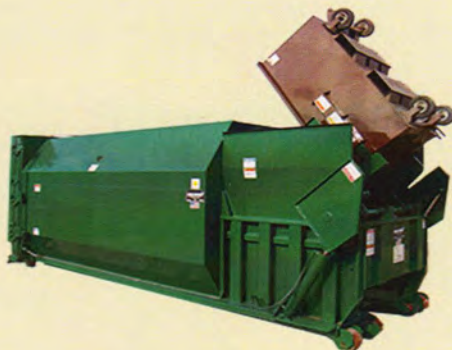
MC



# Cart Dumpers with Trainable Carts



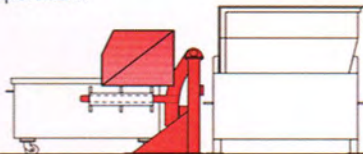
Trainable carts are available in multiple colors to suit customer's location preference. Option to connect carts makes transportation easier.



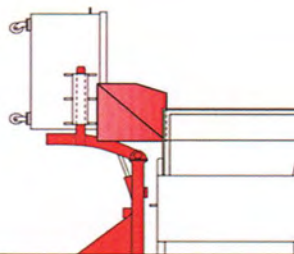
Equipped with an integral ground level cart dumper system, this self-contained compactor is ideal for sprawling apartment complexes, shopping centers, parks, resorts and other applications where a centralized disposal system is needed. Trainable carts can be located in convenient locations throughout the facility and

## In Action ...

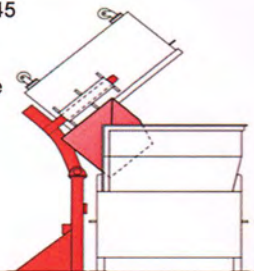
Container is rolled into dumper arms. Mark-Costello's 3- or 10-hp power pack is activated from outside the area of operation.



Special guards prevent spillage or leakage even in the vertical position. Operator has full control of cycle at all times.



Container is tilted a full 45 degrees past vertical, assuring complete cleanout. Dumping cycle is 26 seconds for the heavy-duty and 36 seconds for standard models.



## Specifications

	Standard	Heavy Duty
Cylinders (2):		
Bore	3" (76mm)	4½" (115mm)
Rod	1¼" (32mm)	2½" (64mm)
Stroke	16" (406mm)	25" (635mm)
Hydraulic Pressure	2,000 psi (13.8 MPa)	1,000 psi (6.9 MPa)
Hydraulic Pump Capacity	3 gpm (11.4 L/min.)	10 gpm (37.9 L/min.)
Motor Size	3 hp (2.2kW)	10 hp (7.5kW)
Controls	Manual	Electrical
Cycle Time	36 sec.	34 sec.
Weight Capacity	upto 2,500lbs. (1,134 kg)	upto 5,000lbs. (2,268 kg)
Tilt Cart Weight Capacity	upto 2,000 lbs. (907 kg)	upto 4500 lbs. (2,041 kg)





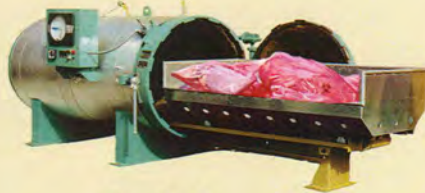
# Medical & Regulated Waste Sterilizers / Autoclaves



The Mark-Costello Company has been building high-pressure waste autoclave sterilizers since 1973. We have been providing quality autoclaves to hospitals, commercial medical waste processors, flight kitchens and agricultural companies with to date over 700 units sold. The Mark-Costello Company Sterilizers use the basic principle of high temperature steam under pressure in an enclosed fully automatic steam retort. All chamber vessels are built in accordance with requirements from the ASME Pressure Vessel Code. Our staff works closely with our clients to design a total waste treatment system best suited for their specific needs and wants.



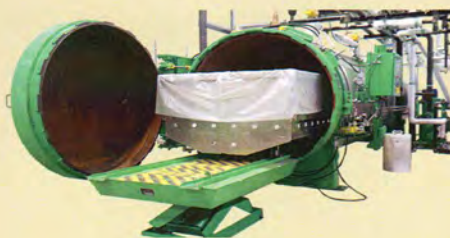
Micro



Standard



Large



High-Volume



Processor

All Mark-Costello Co Sterilizers are equipped with multiple safety features necessary when operating pressure vessels. The entire control panel for the standard sterilizer is Underwriters' Laboratories listed and labeled. All systems can be manufactured to utilize a variety of loading procedures including carts, pullout drawers or carriages. Our staff works closely with our customers to design a waste treatment system best suited for their specific needs and wants. All standard sterilizers have the same minimal utility requirements. All systems employ state-of-the-art technology in controls, information processing, and material handling devices to provide effortless and safe processing of bio hazardous waste.

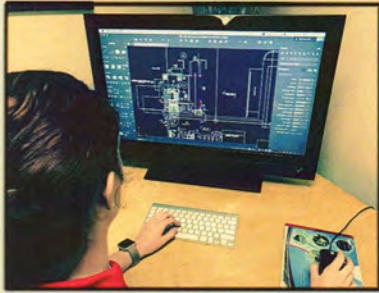
The medical waste sterilizer system operates using lightweight aluminum or stainless steel autoclavable carts fitted with steam resistant casters. A pullout drawer may be utilized in place of carts when feasible. The autoclavable carts must be draped with a polypropylene liner prior to filling unless independent autoclavable bags have been previously filled with red bag waste. Once the autoclavable carts are filled they are moved into the sterilizer chamber via a ramp or scissor lift. The sterilizer door is secured and with a push of the button the cycle begins. Once the desired time and temperature parameters have been met, the unit automatically shuts down and returns to ambient pressure. The carts are removed and the treated waste is ready for final disposal. All standard sterilizers are factory-set to begin the cycle when the internal temperature reaches 275° F. continuing for a 60-minute cycle. Higher temperatures and shorter cycle times can be set by the customer when desired. If there is an interruption in the cycle for any reason, the sterilizer will automatically restart the timer.

The High Volume waste sterilization system functions similarly to the Standard System in that they are high temperature steam operated and require the same time and temperature specifications. Larger systems are utilized primarily by Waste Processing Centers of large Medical Facilities. The sterilizers are specialty designed to cope with the fast-paced action normally encountered in a waste processing plant. They have substantially larger piping and valves. The larger chambers have dual piping and dual valving. The optional double door feature allows for efficient material flow through the sterilizer. Load doors feature hydraulically operated locking/unlocking rings. Autoclavable carts are double the size of the standard unit carts and may be trainable.

*Systems and Solutions Since 1956*



# Design-Engineering-Installation-Employee Training



With computer aided design, we are able to make each clients install requirement a reality. With 60 plus years of experience with installs, The Mark-Costello Company plans the right layout to meet your business's needs. We are ready to work with you to provide solutions to all your waste and recycling needs.



Professional engineering for each install is provided through our engineering department. Our clients receive the best service to meet their individual needs. Our engineers are knowledgeable and experienced with a variety of install layouts that are sure to exceed clients vision.



Have comfort knowing The Mark-Costello Company has thousands of previous installs. We will be there every step of the way. The Mark-Costello Company meets and exceeds ANSI requirements. We offer competitive pricing for leasing and rental programs for any size of business.



Training makes all the difference and completes the installation. The Mark-Costello Company's employees have seen it all, any potential difficulties will be handled with ease due to training and over 60 years of experience. Our training has made us the leader in Waste Handling Equipment, On-Site Medical Waste Sterilization Equipment, Industrial Recycling Equipment, Lifts and Deodorizing Systems in the marketplace.







## Ancillary Equipment & Services



**Service/ PM (Preventative Maintenance):** We are available to assist when needed with our knowledgeable staff 7 days a week. Maintenance from The Mark-Costello focuses on the reliability for the client, quality of work and growth for improvement in performance. R&D is constantly evolving to better our vision and exceed market demands. Customer satisfaction is our priority at The Mark-Costello.



**Remote Trouble Shooting:** Have a system error? With our remote service software a technician can diagnose and repair errors thousands of miles away. This system guarantees ease of service and little down time. Efficiency is our goal at The Mark Costello and we do not settle for less. Available 7 days a week to help you achieve productivity and profitability.



**Parts:** We have the correct parts for each client's system. Our knowledgeable staff will assist in finding the correct size and model number to reduce down time. With extensive experience in Waste Handling Equipment The Mark-Costello has the know-how to assist customers with choosing the correct parts they need.



**Cart Liners:** Available in bulk rolls for ease of customer ordering and efficiency. Special material will withstand equipment's bacteria burning temperatures without melting. This will not only make carts more sanitary and help reduce odor; cart liners also protect and increase longevity of the cart, saving customers money long term.



**Bale Wire:** Galvanized premium grade bale wire is available at The Mark-Costello Company for superior strength and ease of use. Our bale wire is sold by the bundle (125 wires per bundle); bulk ordering assists clients ease of use. Available for vertical and horizontal balers, our bale wire is made in the USA, with the highest quality and premium grade.

15351 Texaco Ave, Paramount, CA 90723

[mark-costello.com](http://mark-costello.com)

(562) 630-7950

