

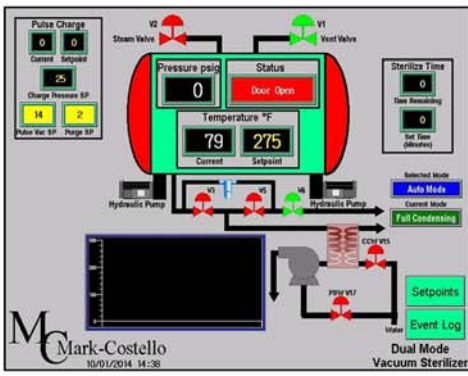
MARK-COSTELLO



Ancillary Equipment



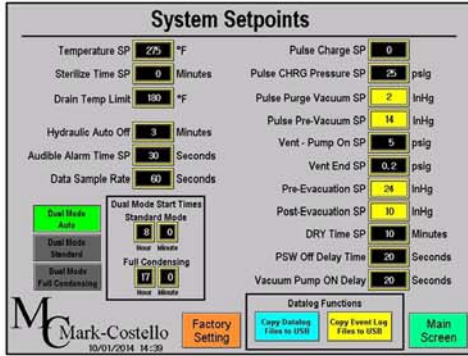
Systems and Solutions Since 1956



Digital Touch Screen Controller

More communications available for memory transfer or storage as well as additional control options.....

The autoclave control panel is packaged in a NEMA rated panel. Our control package is a microprocessor-based PLC system with color touch-screen HMI (Human Machine Interface). The PLC receives analog inputs from the chamber for temperature and pressure and digital switch DC inputs.



The run data is printed on the printout with date and time for the phases of the cycle, sterilize time and temp, max and min temperature during sterilization; the data stored is for the last run and it includes the date, time, weight, # of carts, phase, temp and pressure each minute so the units condition can be checked on the screen or over Ethernet. A 2 gig compact flash with a large storage capacity is standard. When going to remote access, the remote screen will show the actual local screen and the current values.



Vacuum System

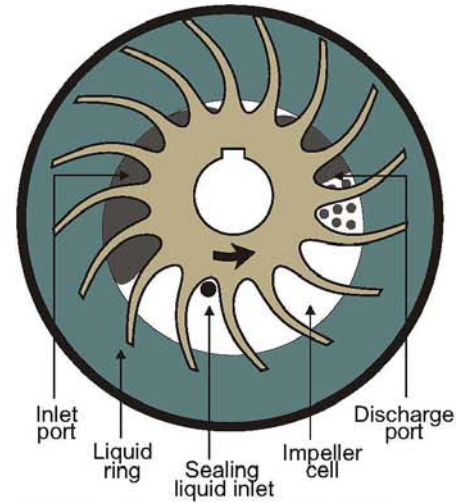
High Efficiency Mechanical Liquid Ring Vacuum Pump:

Pre-vacuum:

The pre-vacuum process will evacuate the autoclave 24"- 28" Hg. This process will achieve the removal of air from the autoclave to provide a quick and efficient penetration of steam throughout the medical waste load.

Post-vacuum:

The post-vacuum process removes excess steam from the vessel and expedites the steam purging process. This process removes excess moisture from waste load resulting in a lighter/drier treated waste product for disposal. Moisture removal effectively controls nuisance odors.



Steam Condenser

Independent stainless steel plate condenser. The condenser is designed for quick and efficient steam purge from the autoclave vessel. Process steam is fully condensed externally from the autoclave vessel. The Mark-Costello supplied stainless steel plate heat exchanger is highly efficient-has lower flow velocities and pressure drops as compared to the typical shell and tube heat exchanger furnished with eductor systems.



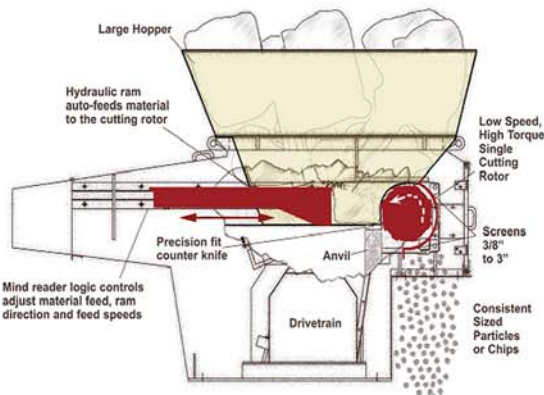
Scotch Marine Fire Tube Boilers



Scotch Marine is a two-pass fire tube design with completely submerged tubes for optimal efficiency and longer life. Boiler pressures do not fluctuate because the upper third of the boiler is the steam chamber compared to other boiler designs with smaller steam chambers.

Heavy Duty fiberglass insulation board is covered with a heavy galvanized sheet metal jacket to effectively reduce heat losses. Unlike most other boiler designs, maintenance of the Scotch Marine is facilitated by the uncomplicated design and ease of access to both boiler and burner.

With reasonable boiler care, tubes are not often in need of replacement. When replacement is required 2" O.D. straight tubes may be easily retubed by most boiler specialists. Over six square feet of heating surface per boiler horsepower guarantees high boiler performance efficiency.



Shredding Medical Waste to an Unrecognizable State

We incorporate world class components into our systems and in the case of shredding and grinding medical waste, we have the best shredder available manufactured by Vecoplan. Shredding medical waste in preparation for landfill disposal is a critical part of medical waste processing. Designed specifically for medical waste, Vecoplan M-Series Medical Waste Shredders offer the most advanced and efficient shredding available today. Vecoplan medical waste shredders also add the ability to shred hospital documents.



Mark-Costello Cart Dumpers



Autoclave Cart to Stationary Compactor



Autoclave Cart to Self-Contained Compactor



Autoclave Cart to Shredder/Conveyor



Autoclave Cart to Stationary Compactor



Autoclave Cart to Self-Contained Compactor



Autoclave Cart to Shredder/Conveyor



One Cubic Yard Cart to Autoclave Cart



Multiple Carts w/Adapter to Autoclave Cart



10 & 17 Gallon Containers to Autoclave Cart



One Cubic Yard Cart to Autoclave Cart



Multiple Carts w/Adapter to Autoclave Cart



10 & 17 Gallon Containers to Autoclave Cart